



NOVIA



Freedom of form





- Environmentally friendly
  - Water based
  - Free of solvents





# Excellent fire properties

Reaction to **European** Fire Classification: B s1 d0

In accordance with EN 13501 – 1: 2002



0 s



15 s



2 min.



15 min.



22 min.





# Excellent fire properties

Reaction to **US** Fire Classification: **A**

In accordance with ASTM E84:

Standard test method for surface burning characteristics of building materials

- Flame Spread Index (FSI): **20**
- Smoke Developed Index (SDI): **15**







# Good physical & mechanical properties

"E" glass fibre 12-15 wt% test conditions 20°C, 65% RH

Property	Unit of Measure
Density	1500 - 1800 kg/m <sup>3</sup>
Compressive strength	25 - 30 MPa
Tensile strength (UTS)	25 - 35 MPa
Bending elastic limit (LOP)	15 - 20 MPa
Bending strength (MOR)	50 - 65 MPa
Youngs modulus	5 - 6 GPa
Strain to Failure	2%
Impact Strength (Charpy)	20 KJ/m <sup>2</sup>





- Low exotherm

Maximum 45°C

- Zero shrinkage

Maximum expansion on set : 0,3 %





# Excellent adhesion



Poraver



Wood



EPS



Triaxial fibre





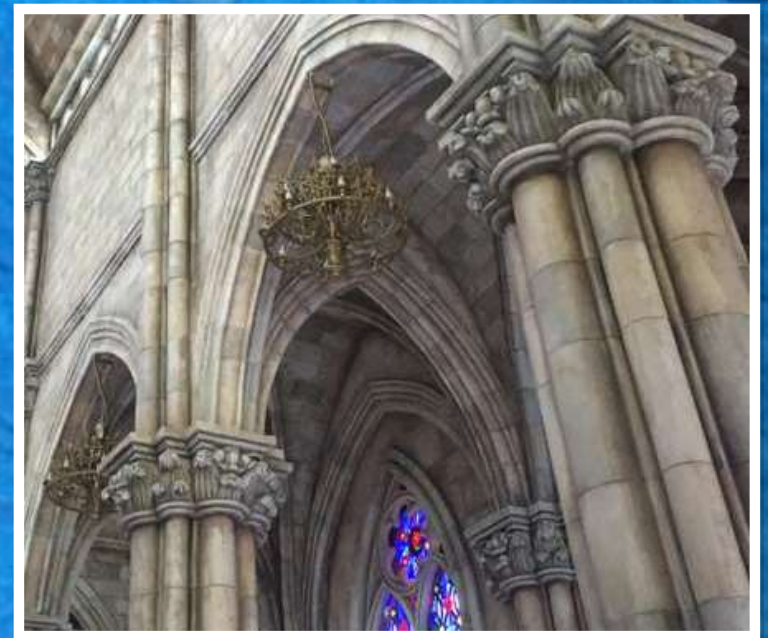
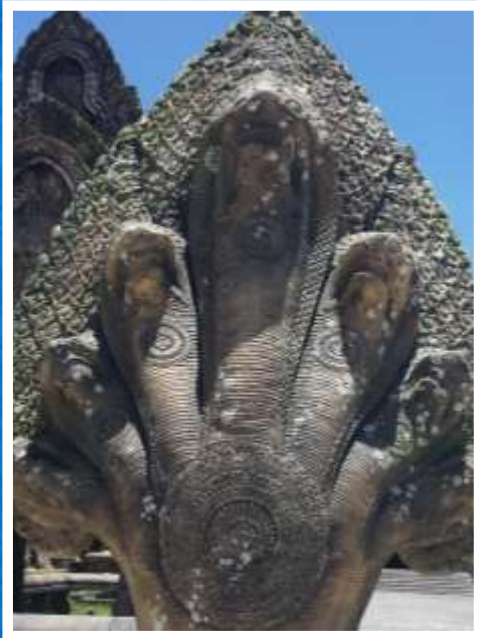
# Better & Safe working place







# Excellent surface finishes







# Processing methods

Casting



Laminating



Spraying



Roto Moulding







# Standard delivery program - LP01



7,5 kg



15 kg



60/75 kg



3150 kg





# A1 Control additives



- **Thix A;** to thicken (gelcoat) the A1
- **Thix B;** to thicken (paste) the A1
- **Accelerator;** to speed up the processing time
- **Diluent;** reduces the viscosity
- **Retarder;** to slow down the processing time





# Glass fabrics

Special A1 triaxial fibre with an open structure  
and C-veil for a smooth surface







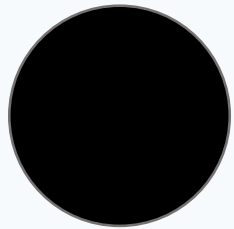
# Mixing blades



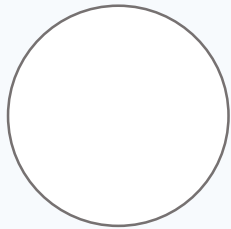




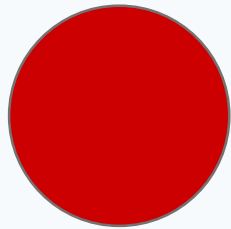
# Fillers - Pigments



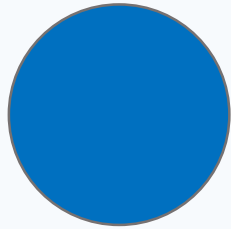
Black



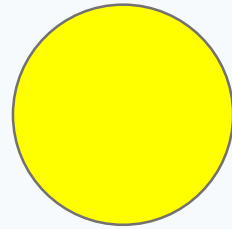
White



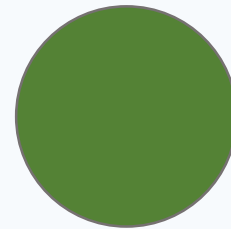
Red



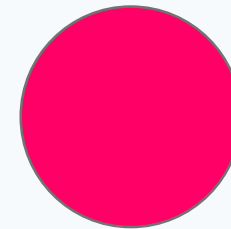
Blue



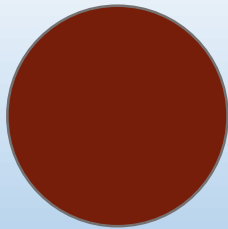
Yellow



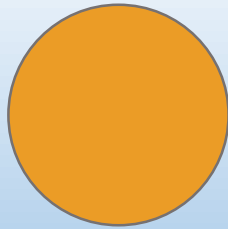
Green



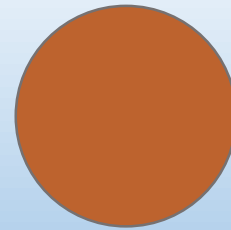
Magenta



Terracotta



Yellow ochre



Orange ochre





# Fillers - Sand & Stone

Grey



Red



Orange







# Fillers - ATP powder & Poraver



**ATP powder;**  
is a volume  
thickener



**Poraver;**  
is a light  
weight filler





# Fillers - Metal powders



Bronze powder



Copper powder



Iron powder





# How to make

825 g - A1 liquid  
1650 g - A1 powder  
750 g - A1 sand  
Thix A  
scales  
mixing cups  
brushes  
mixing machine  
triaxial fibre  
mould  
water





# How to make an A1 column with sand structure



**1.** Calibrate the scale and weigh 250 g liquid, 500 g powder and 500 g yellow sand.



**2.** Add the powder slowly to the liquid and stir with the mixer until you have a smooth surface.



**3.** Add sand to the A1 and stir well. Also add 5 g Thix A to the mixture of A1 and sand. By using Thix A the A1 becomes thicker.



**4.** The surface must reach a thickness of 3 mm. Let the panel dry for  $\pm 20$  min. Clean the brush with water.



# How to make an A1 column with sand structure



**5.** For the 2nd layer of A1 we weigh 125 g liquid, 250 g powder and 250 g yellow sand, and mix them.



**6.** Apply this little amount of A1 on the surface and divide it equally. Unevenness are filled.



**7.** For the 4 layers of triaxial fibre we weigh 450 g liquid and 900 g powder, and mix them. Apply a thin layer of A1 on the surface and divide it equally with a brush.



**8.** Apply a piece of triaxial fibre with the same size as the object on the surface and smoothen it with a brush.



# How to make an A1 column with sand structure



**9.** Again apply a thin layer of A1 and smoothen the A1 over the surface. Repeat step 8 and 9 four times.



**10.** Let it rest for one hour.



**11.** Take the silicone mould carefully from the support mould.



**12.** The final result is an exact copy of the mould.



# Main applications

Architect



Art & Sculpture



Facade



Interior Design



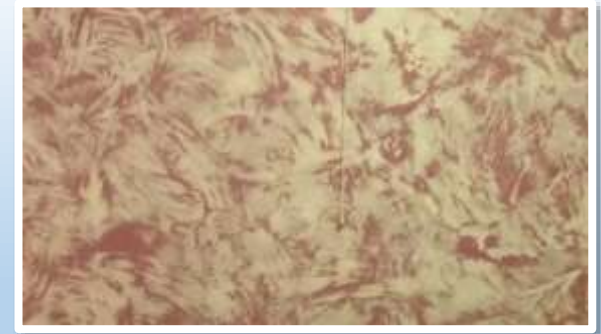
Theming & Decoration



Foundry



Plaster Finish







Tiles in hotel - Suberta  
Turkey

# Architect



# Benches Amsterdam Museum Square - Be Concrete Netherlands



Architect



# Mahler - Nedcam, Poly Products The Netherlands



**Architect**



Coffee Corner  
IBP Interior, Nedcam,  
GSO Development  
The Netherlands



Architect



# RAAAF [Rietveld Architecture-Art-Affordances] The Netherlands



Architect





# Art & Sculpture

(k)uieren: Silke De Bolle - Belgium







**Lut Van Dievel**  
**Belgium**

**Art & Sculpture**



**Kramer Kunstwerken  
The Netherlands**



**Art & Sculpture**





Campanula - Ron van de Ven  
The Netherlands





Kenmuon -  
Hironori Kawabata  
Japan





## 'Bath Bunny' - Studio MAKY The Netherlands



Art & Sculpture





**Fragments - Dylan Lewis**  
**South Africa**



# Statue of Energy - Jurriaan van Hall The Netherlands



Art & Sculpture



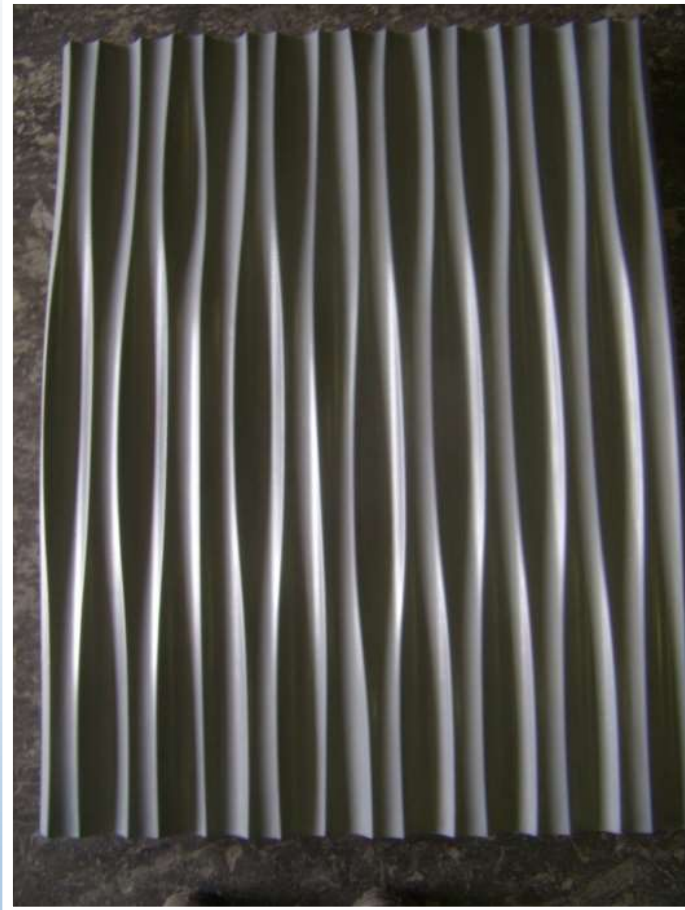


# Facade

Panels - Paragon Architects  
South Africa



## Panels - Paragon Architects South Africa



Facade



**Panels - Theme park IMG  
City of Arabia - Dubai**



**Facade**





## Columns - Vazupol The Netherlands



Facade



## Nijmegen - Be Concrete The Netherlands



Facade



# Panels - OSV Ukraine



Facade



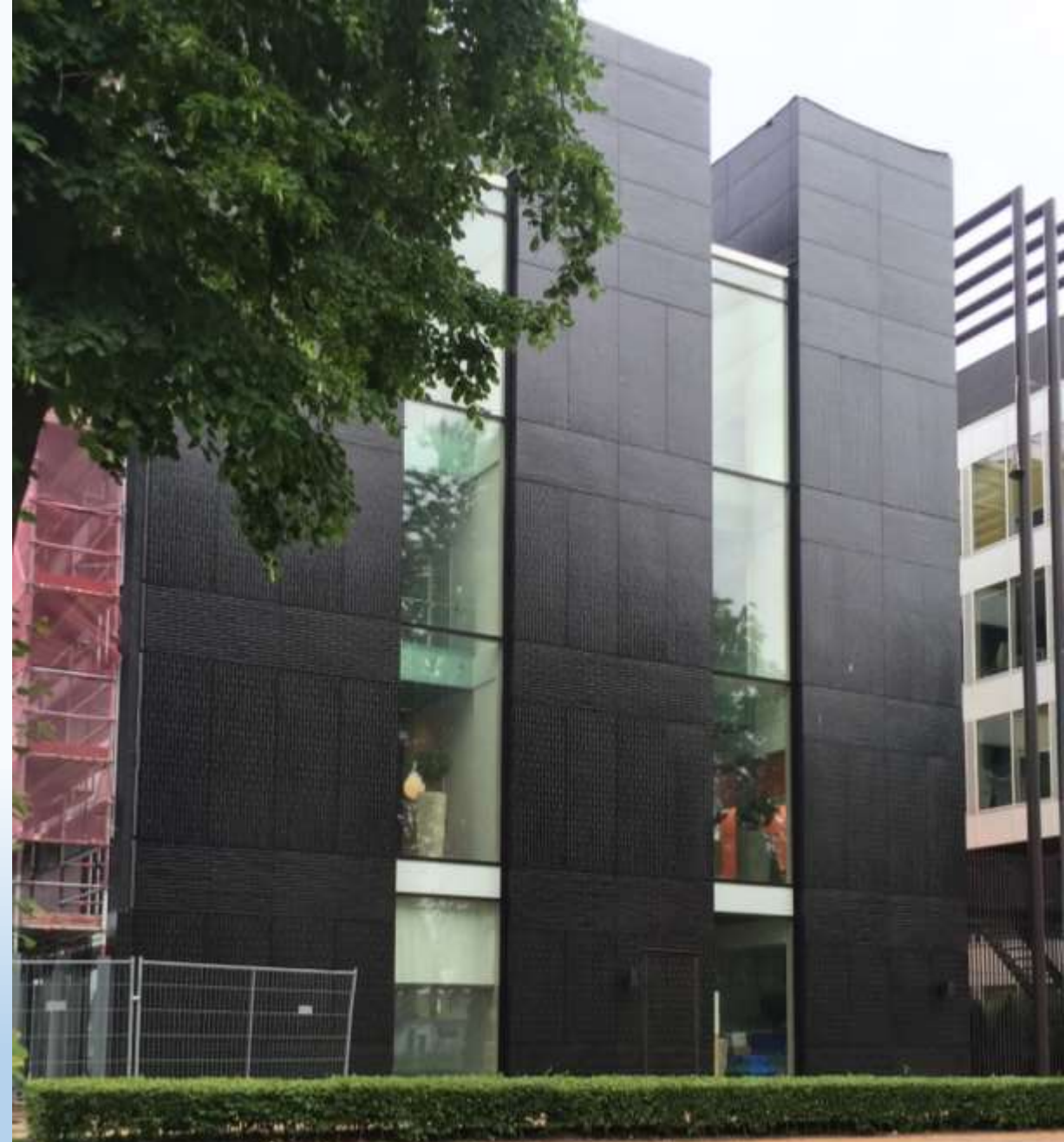
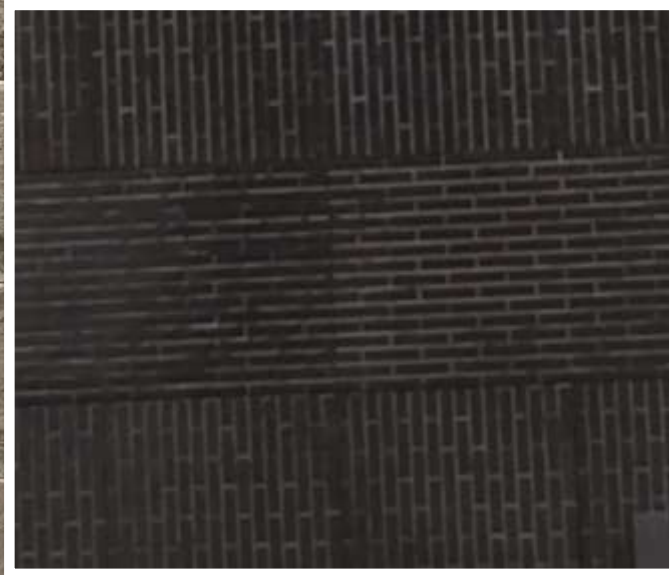
# Church with travertin design Poland



Facade



**Ekosiet  
The Netherlands**



**Facade**





# Interior Design

Reception desk - Nedcam, Be Concrete  
The Netherlands





Rudi Respeel - Belgium

Interior Design



# Panels - Poly Products The Netherlands



Interior Design



# Panels Ahoy - Kool The Netherlands



Interior Design





Benches - Suberta  
Turkey



Interior Design



**Pastry Shop - Hlios Epigrafes  
Greece**



**Interior Design**



**Wall Decoration -  
Decoloft24  
France**



**Interior Design**





Asia Park - Vietnam

# Theming & Decoration







## Asia Park - Vietnam



**Theming & Decoration**



## Asia Park - Vietnam



Theming & Decoration



# Ha Long Park Vietnam



Theming & Decoration



Ha Long Park - Vietnam



Theming & Decoration



## Ha Long Park - Vietnam



Theming & Decoration



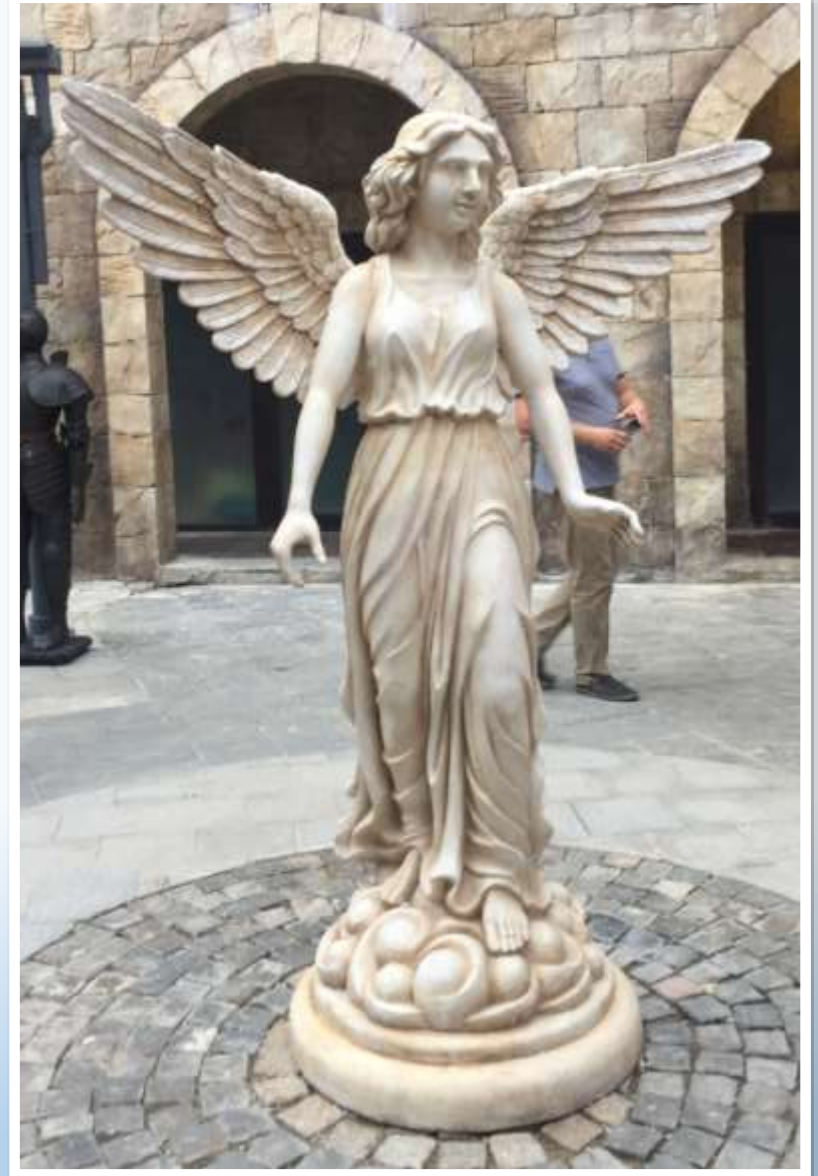
# Bà Nà Hills - French Village Vietnam



Theming & Decoration



## Bà Nà Hills French Village - Vietnam



Theming & Decoration





## Bà Nà Hills - French Village Vietnam



**Theming & Decoration**



# Bà Nà Hills - French Village Vietnam



Theming & Decoration





## Bà Nà Hills – French Village Vietnam



Theming & Decoration



Xenom - Israel



Theming & Decoration





## Exposition '1-1, elf idolen en Jan Mulder' Kim De Ruysscher - Belgium



Theming & Decoration





## Heineken Music Hall - Decorateler Vorm en Decor The Netherlands



Theming & Decoration



## Movie set 'Los Amantes Pasajeros'- Spain



Theming & Decoration





# Plaster Finish

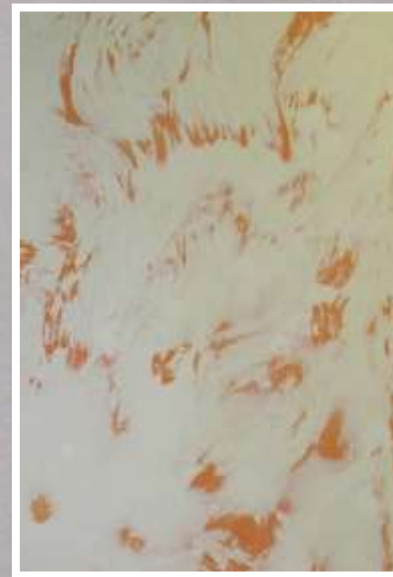






**Plaster Finish**





Plaster Finish





**Plaster Finish**





**Bathroom**

**Plaster Finish**





Gerry van der Velden - Beeldengieterij Tenax  
The Netherlands

# Foundry







**Art Studio Sijen  
The Netherlands**

**Foundry**



# Armando - Bronsgieterij Kemner The Netherlands



Foundry





## Beeldengieterij Tenax The Netherlands



Foundry



# Richard van der Koppel

## The Netherlands



Foundry



## Chesspeak - Tineke Kurvink The Netherlands



Foundry



# Moulds - Art Fabrication Denmark



Foundry